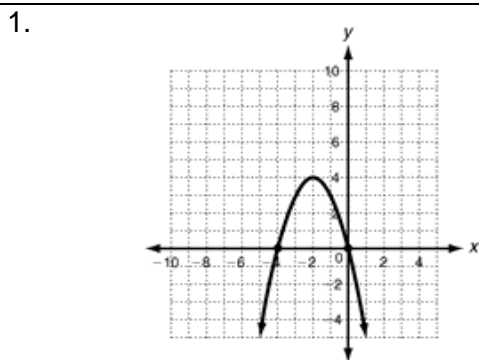
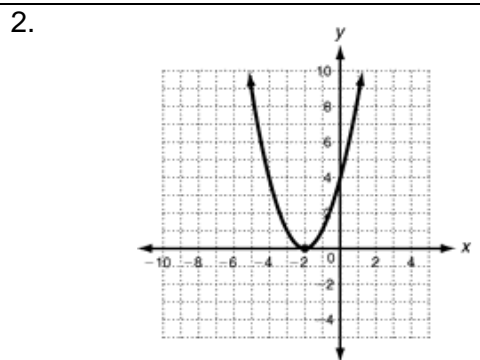


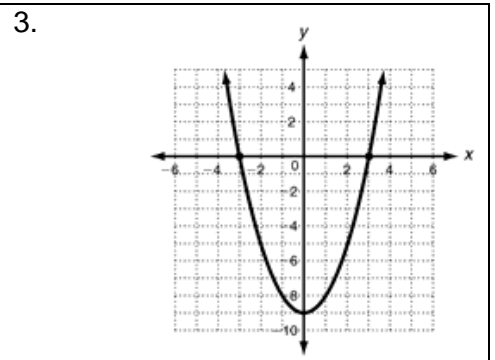
Determine the value of the zeros, the equation of the axis of symmetry, the y-intercept and the vertex.



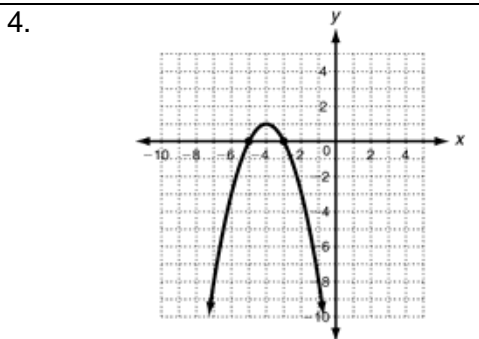
Y-intercept:
 Zeros/x-intercepts:
 Axis of symmetry:
 Vertex:



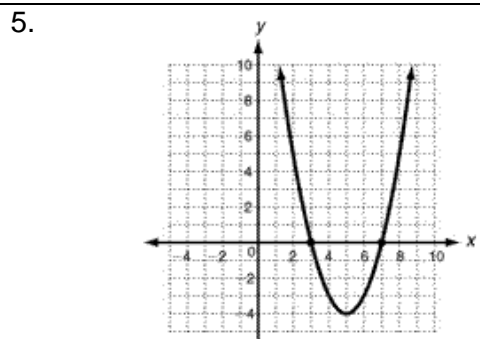
Y-intercept:
 Zeros/x-intercepts:
 Axis of symmetry:
 Vertex:



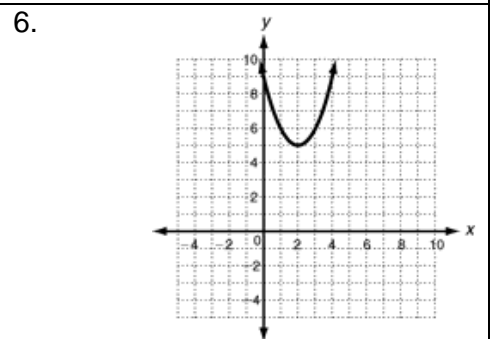
Y-intercept:
 Zeros/x-intercepts:
 Axis of symmetry:
 Vertex:



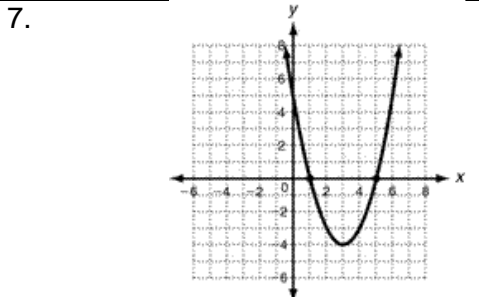
Y-intercept:
 Zeros/x-intercepts:
 Axis of symmetry:
 Vertex:



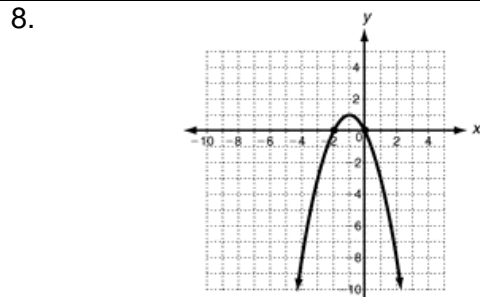
Y-intercept:
 Zeros/x-intercepts:
 Axis of symmetry:
 Vertex:



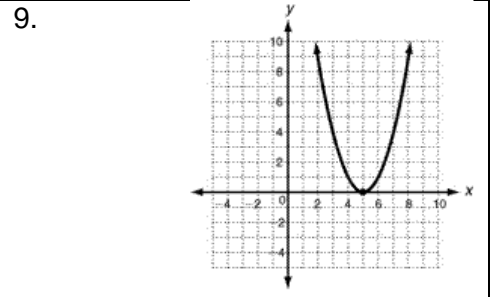
Y-intercept:
 Zeros/x-intercepts:
 Axis of symmetry:
 Vertex:



Y-intercept:
 Zeros/x-intercepts:
 Axis of symmetry:
 Vertex:



Y-intercept:
 Zeros/x-intercepts:
 Axis of symmetry:
 Vertex:



Y-intercept:
 Zeros/x-intercepts:
 Axis of symmetry:
 Vertex: