

## Pre-Cal CW 4.1-4.2 Radians, Degrees, Right Triangles and The Unit Circle

State the complement and the supplement for each:

1. 0.72

2.  $\frac{5\pi}{12}$

Convert the following angle in radians to degrees:

3.  $\frac{15\pi}{8}$

State one positive and one negative coterminal angle for each:

4. 6.72

5.  $\frac{13\pi}{4}$

Given  $\cot \theta = \frac{1}{2}$ , find the remaining 5 trig ratios:

6.  $\sin \theta =$

7.  $\cos \theta =$

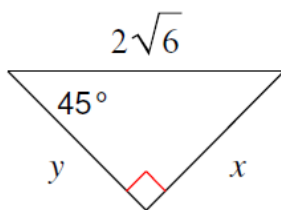
8.  $\csc \theta =$

9.  $\sec \theta =$

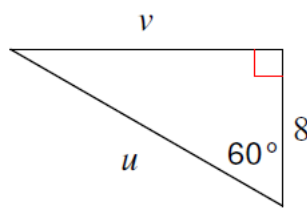
10.  $\tan \theta =$

Find the missing sides of each right Triangle:

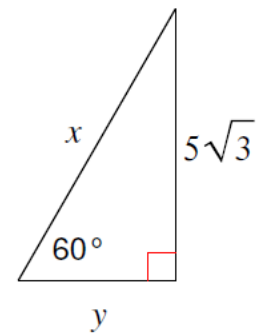
11.



12.



13.



Find the exact value of each Trig function (keep in mind: on a quiz you will not have a pre-made unit circle)

14.  $\sin \frac{4\pi}{3} =$

15.  $\tan 330^\circ =$

16.  $\sec \frac{3\pi}{4} =$