

Name _____

Period _____

Histograms and Dot Plots Worksheet

Directions: Create a histogram for each set of data. For the first problem, the graph is set up for you. For the second problem, you will need to determine the best way to number the axes. Do not forget to include a title as well.

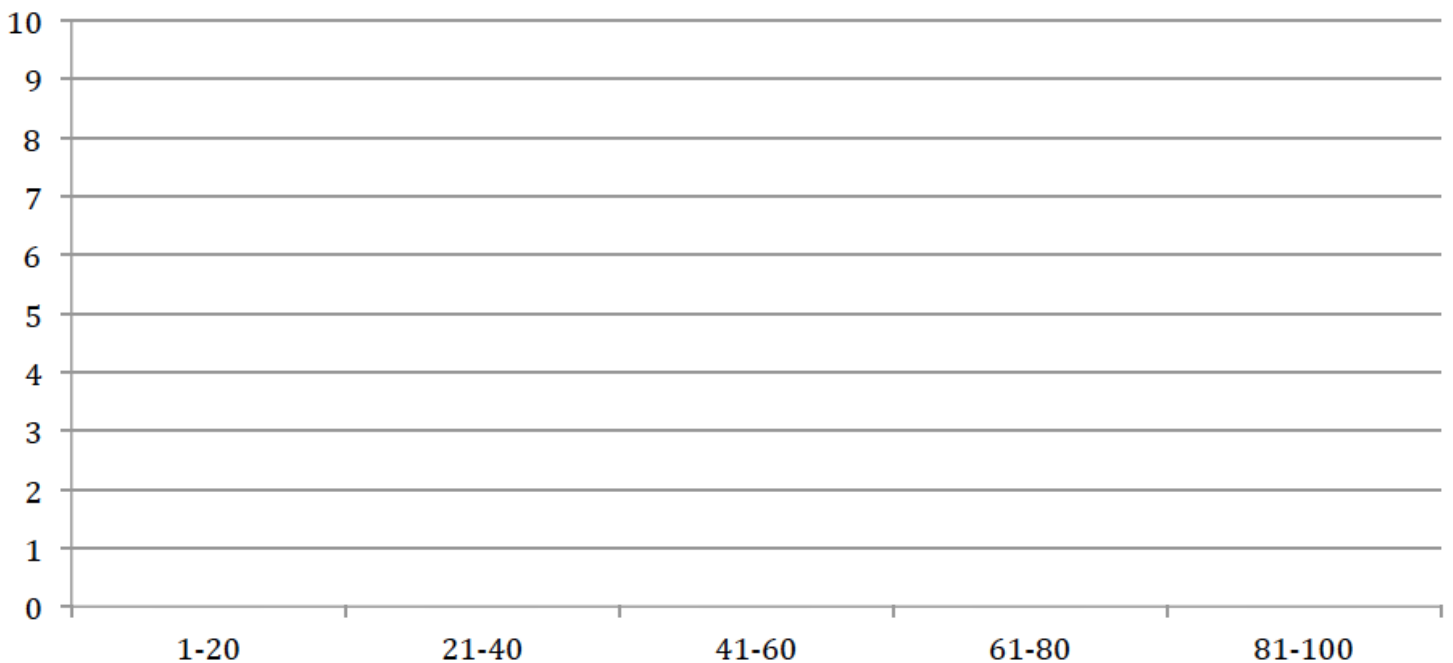
1. Chocolate candies per bag of trail mix:

50	42	100	45	68	32	100
67	61	31	75	39	62	64
49	55	51	33	99	96	64

Frequency table:

Interval	# of values
1-20	
21-40	
41-60	
61-80	
81-100	

Chocolate Candies per Bag of Trail Mix

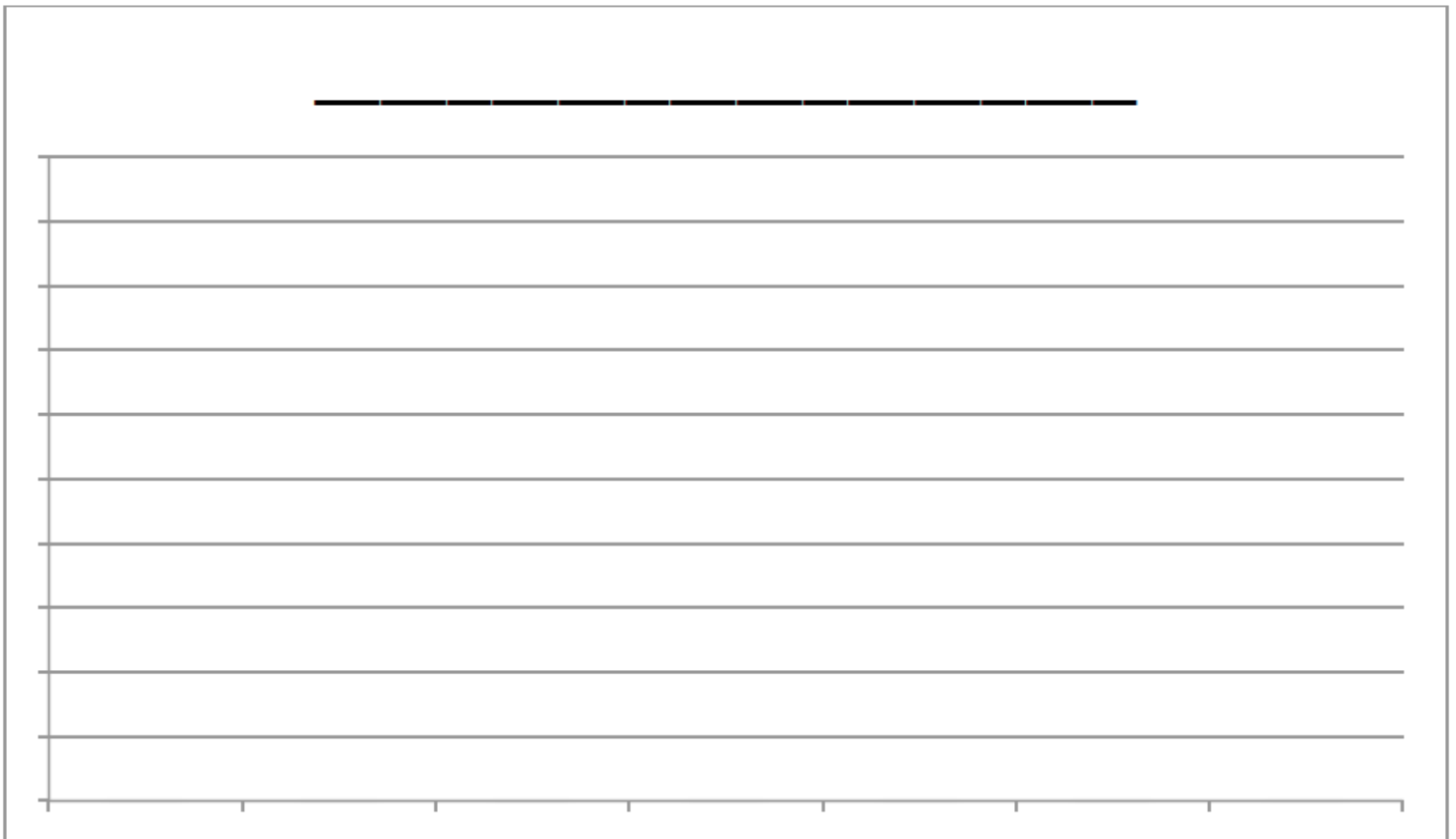


2. Test scores, out of 100 points

92 84 95 77 74 80 95 70 66
73 68 90 78 64 72 78 76 65
59 71 77 92 91 89 74 76 90

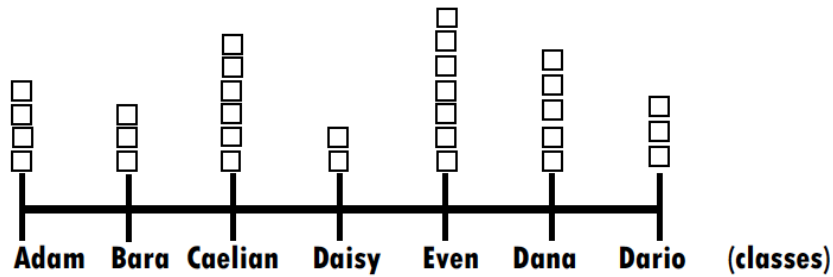
Frequency table:

Interval	# of values



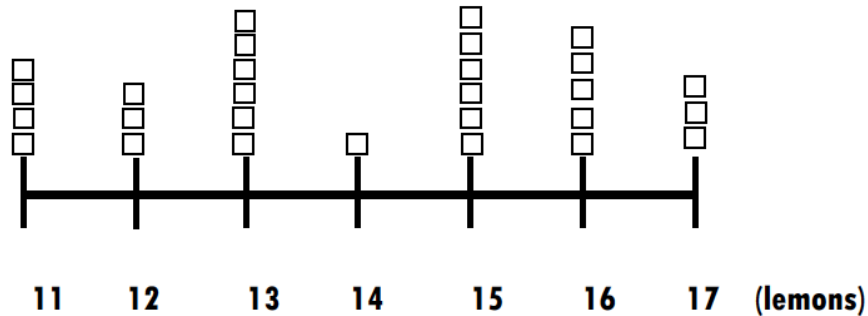
Directions: Answer the following questions based on each of the dot plots.

1. The dot plot below shows the number of students in each of the teacher's class.



- How many total students are there in all classes?
- Which class has the least number of students?
- Which class has the most number of students?

2. The dot plot shows the number of lemons each person has.



- How many total individuals are represented in the dot plot?
- What is the total number of lemons that the individuals have?

3. The following data shows the amount of chocolate Mrs. Latimer ate over the last 30 days. Create a dot plot to show how much chocolate she ate.

3, 5, 9, 2, 4, 5, 3, 8, 7, 4, 2, 9, 7, 1, 2, 2, 5, 7, 12, 6, 3, 7, 9, 2, 1, 7, 4, 3, 9, 11

